

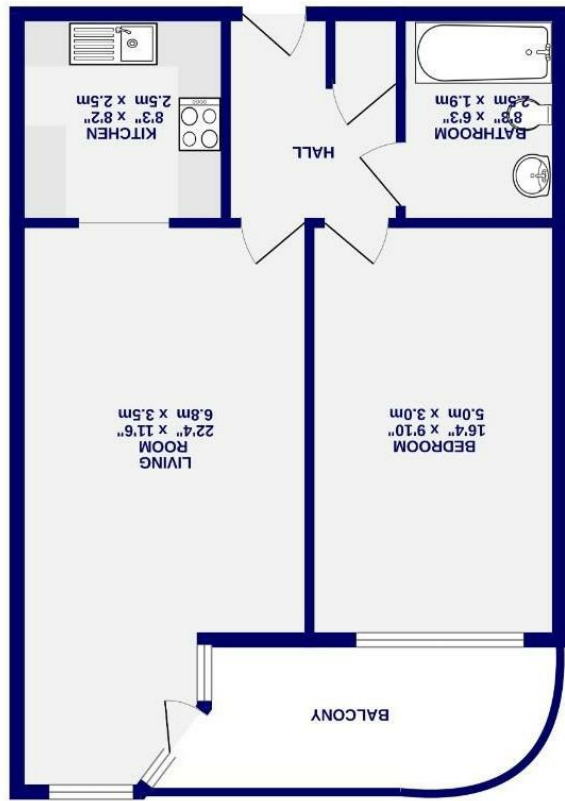
These particulars have been prepared as accurately and as reliably as possible, but should not be relied upon as 'statement of fact', if there is any point which is of particular importance to you, please contact the office and we would be pleased to check the information. We have not tested any services, appliances, equipment or facilities and nothing in these particulars should be deemed to be a statement that they are in good working order, or that the property is in good structural condition or otherwise. Any areas, measurements, floor plans or distances referred to are given as a guide only and are not precise. Purchasers must satisfy themselves by inspection or by otherwise regarding the items mentioned above and as to the correctness of each of the statements contained in these particulars. No person in the employment of Ashtons has any authority to make or give any representation or warranty whatsoever in relation to this property or these particulars nor enter into any contract relating to the property on behalf of the vendor.

property on behalf of the vendor.

- Second Floor Apartment
- One Bedroom
- Balcony
- Living/ Dining Room
- Modern Condition
- Private Parking
- EPC C

Leasehold
Council Tax Band - B

Eboracum Way,
York
YO31 7SR



2ND FLOOR
564 sq.ft. (52.4 sq.m.) approx.



Eboracum Way
, York
YO31 7SR

£170,000



Set on the second floor of the well regarded Venice House development, this spacious one bedroom apartment offers comfortable city living just a short walk from York's historic centre.

Enjoying a highly convenient location, the apartment is positioned approximately five minutes on foot from the city centre, providing easy access to York's shops, cafés, restaurants and cultural attractions, while also benefitting from a quieter residential setting.

The accommodation is entered via a welcoming hallway which leads through to a generous living and dining space, ideal for both everyday living and entertaining. From here there is access to a private balcony seating area which overlooks the attractive internal courtyard, providing a pleasant outdoor space to sit and relax. The kitchen is well arranged to suit modern lifestyles and offers ample storage and preparation space.

The bedroom is a particularly good size and comfortably accommodates a double bed along with additional furniture. A well appointed bathroom completes the internal layout.

Further benefits include secure allocated car parking, adding real practicality for city centre living.

An excellent opportunity for first time buyers, investors or those seeking a conveniently located York apartment with generous proportions, outdoor space and secure parking.

Leasehold
Length of lease- 107 years remaining
Ground rent - £600 per annum
Service Charge- £3,419 per annum

Council Tax Band- B

